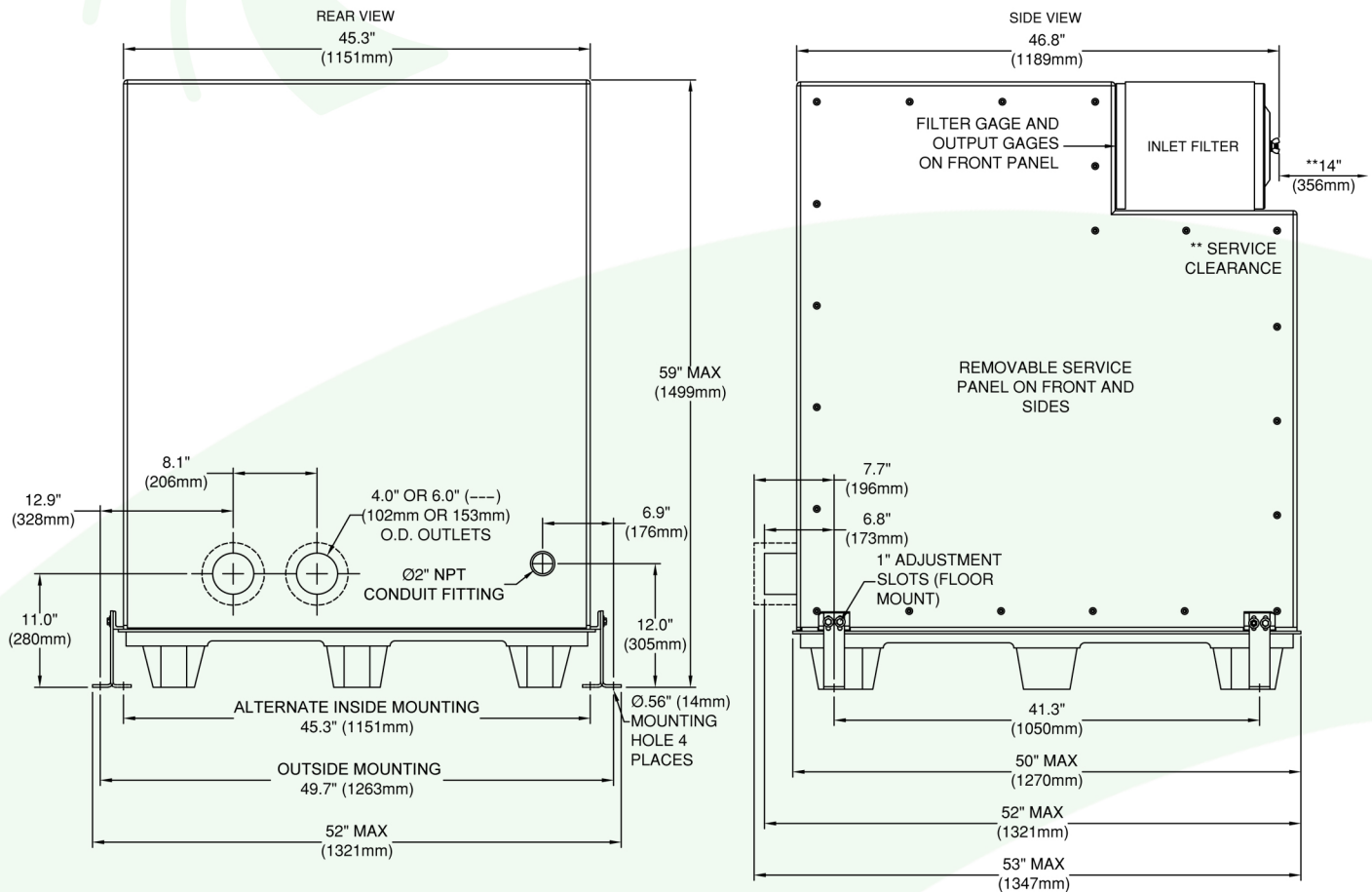
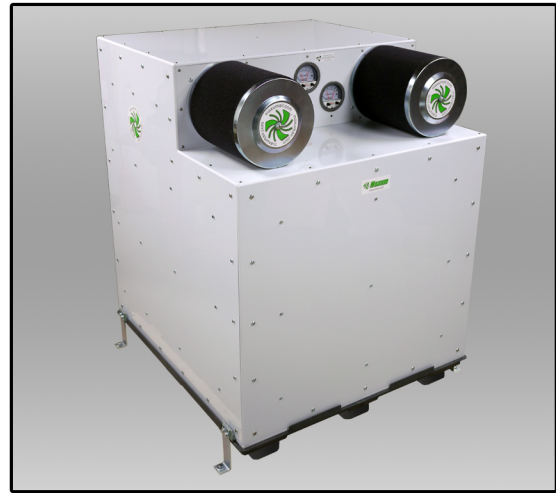


## BLOWER ENCLOSURE FOR MODELS V20, V25, V30, V40



Part #	Type	Weight
CAV20*B00**	V20	779lb. (354kg)
CAV25*B00**	V25	904lb. (410kg)
CAV30*B00**	V30	916lb. (416kg)
CAV40*B00**	V40	1,049lb. (476kg)

\*Dimensions and weights are approximate and subject to change without notice.