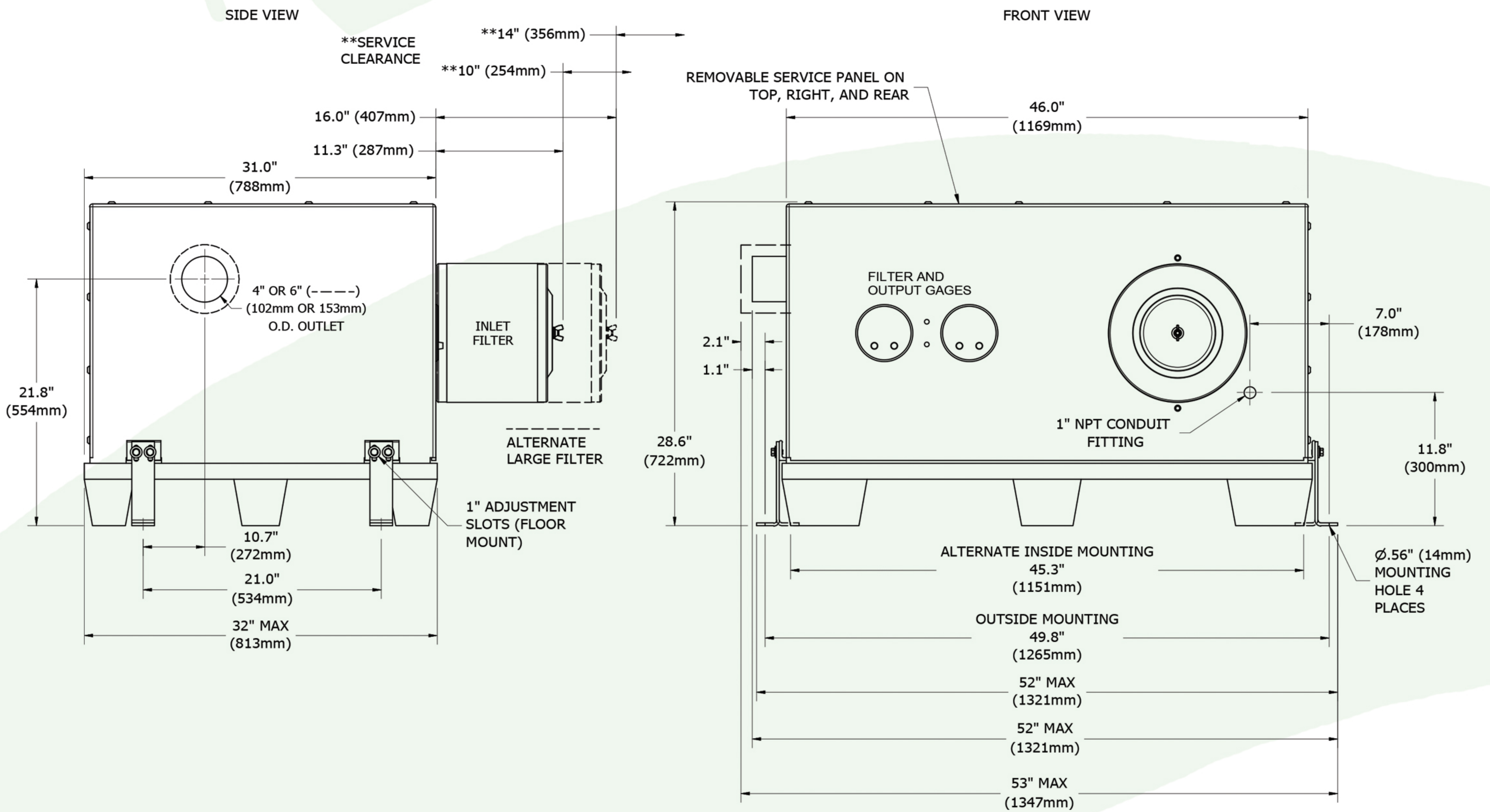




## Horizontal "S" Enclosure (L07, L10, M15, M20)



Part #	Type	Weight
CAL07*B0CX*	L07	333lb. (151kg)
CAL10*B0CX*	L10	391lb. (178kg)
CAM15*B0CX*	M15	408lb. (185kg)
CAM20*B0CX*	M20	491lb. (223kg)

\*Dimensions and weights are approximate and subject to change without notice.