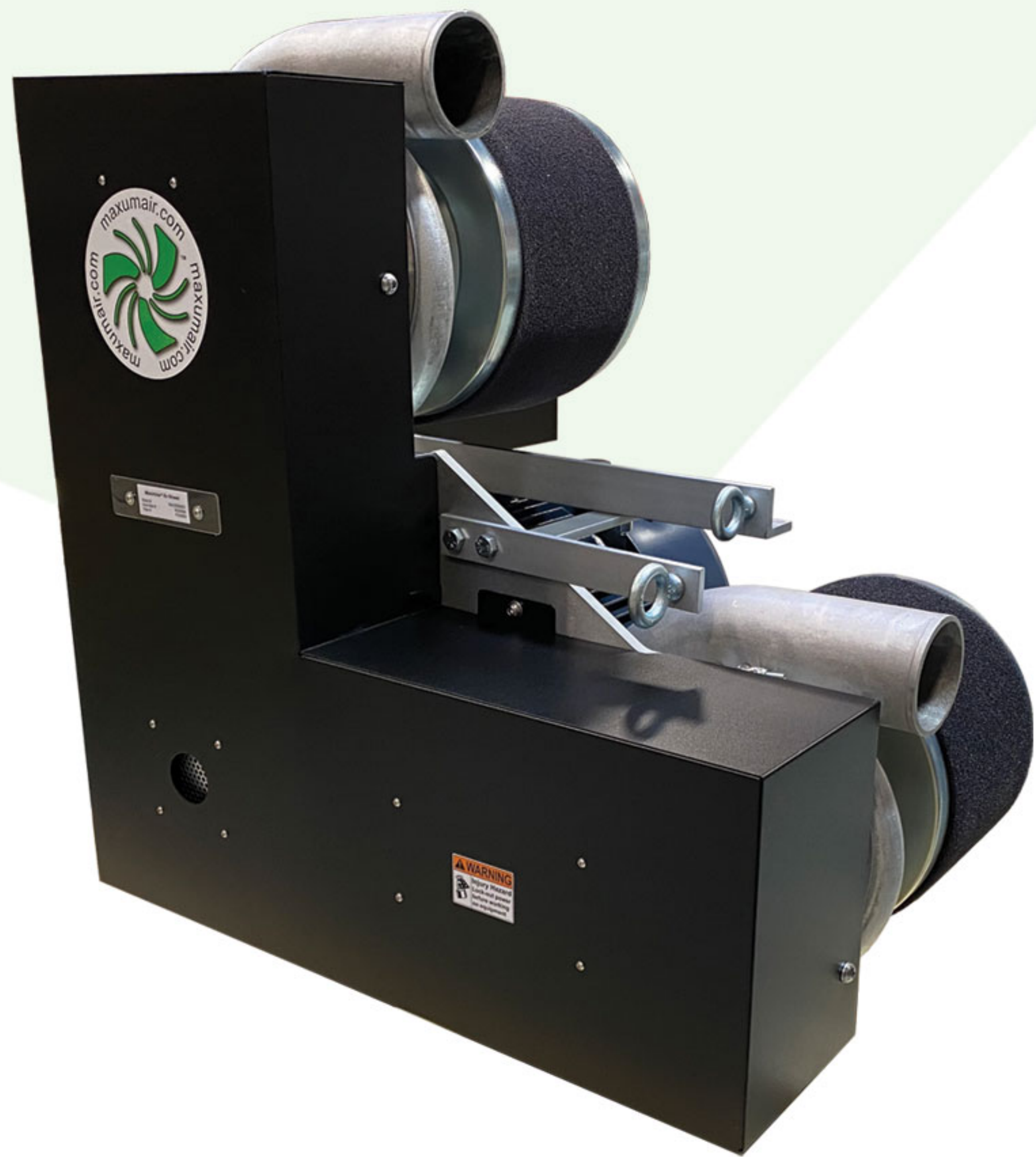


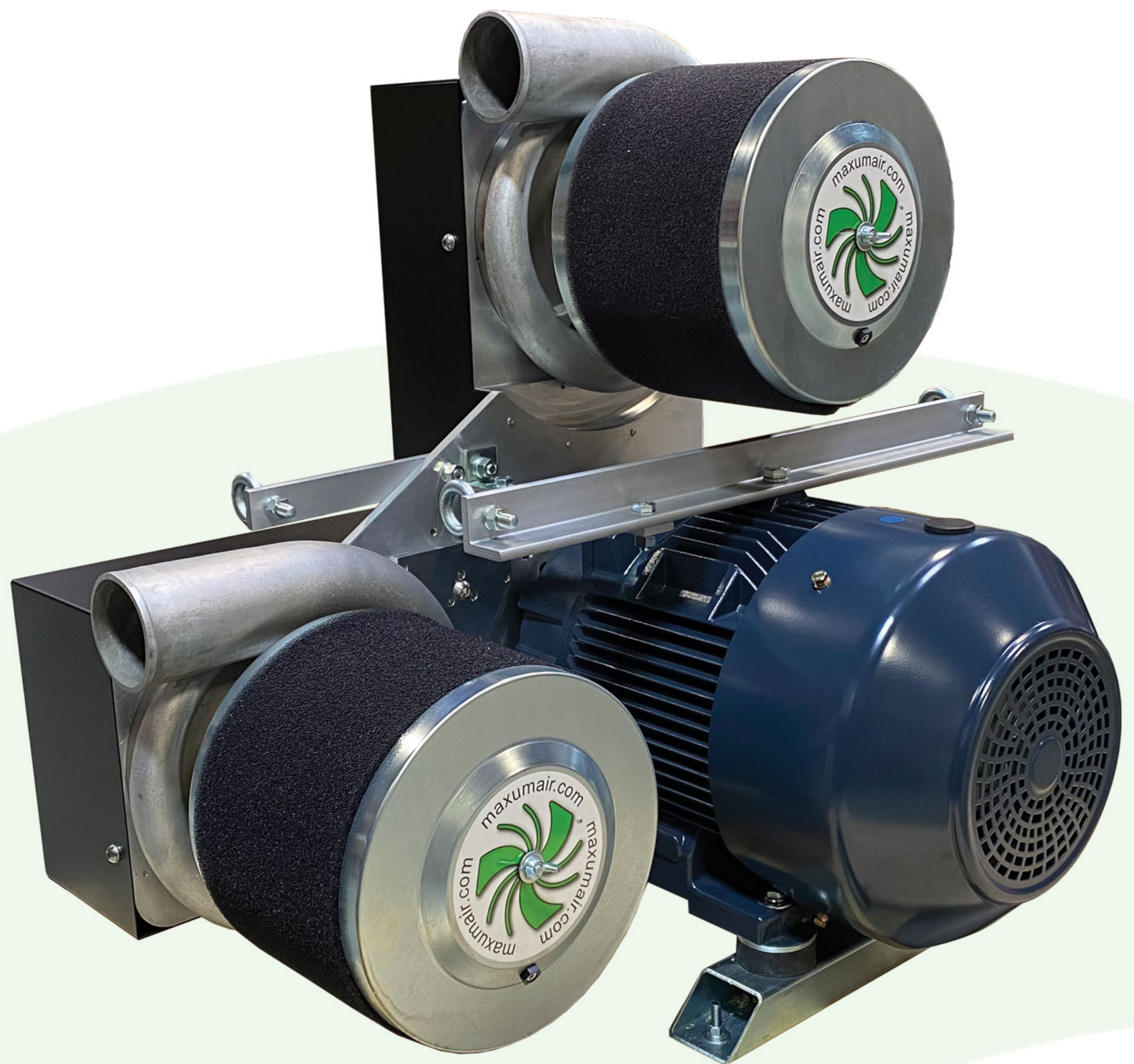


MAXUMIZER® V50 AIR BLOWER



-Bearing Bridge™ drive system provides industrial durability and extended life

-Achieves higher output at lower operating speeds



-High efficiency system uses less horsepower and SAVES ENERGY

-Dual outlets standard

-Complete system with integrated filter and vibration mounts

All Maxum Air Blowers are specifically designed to provide the optimum output range and energy efficiency for blowing and drying applications. They are the ideal choice for powering your blow-off system when used with *Maxumizer* Air Knives and Maxum's exclusive and revolutionary Nozzle Bar®*

Maximum Performance..... Less Hype.

Maxum LLC | MaxumAir.com
Phone: 248-726-7110 Fax: 248-852-4312

*U.S. Patent
#8,814,067
#8,551,529
#9,557,108



NOTE: Output data for Model V Blowers is the total combined output of BOTH blower heads.

| | | Model V50 | | | | | | | | |
|------|----------|-----------|------|------|------|------|------|------|------|------|
| CFM | | A | B | C | D | E | F | G | N | P |
| 1600 | pressure | 58 | 64 | 71 | 78 | 86 | 95 | 104 | * | * |
| | HP | 27.4 | 28.4 | 29.8 | 31.2 | 33.2 | 35.2 | 38.2 | * | * |
| 1700 | pressure | 58 | 64 | 70 | 78 | 85 | 95 | 104 | * | * |
| | HP | 27.6 | 29.2 | 30.4 | 31.8 | 34.0 | 36.2 | 39.0 | * | * |
| 1800 | pressure | 57 | 63 | 70 | 77 | 85 | 95 | 104 | 114 | * |
| | HP | 28.8 | 29.8 | 31.2 | 32.8 | 34.8 | 37.2 | 39.8 | 43.6 | * |
| 1900 | pressure | 56 | 63 | 69 | 77 | 84 | 94 | 103 | 113 | 124 |
| | HP | 29.6 | 30.6 | 32.2 | 33.6 | 35.8 | 38.4 | 41.0 | 45.2 | 47.8 |
| 2000 | pressure | 56 | 62 | 69 | 76 | 84 | 94 | 103 | 112 | 123 |
| | HP | 30.4 | 31.2 | 33.0 | 34.4 | 36.8 | 39.6 | 42.4 | 46.6 | 49.2 |
| 2100 | pressure | 54 | 62 | 68 | 76 | 83 | 94 | 102 | 112 | 123 |
| | HP | 31.0 | 31.8 | 33.4 | 35.0 | 37.4 | 40.6 | 44.2 | 47.8 | 50.4 |
| 2200 | pressure | 53 | 60 | 67 | 75 | 83 | 93 | 102 | 111 | |
| | HP | 31.4 | 32.4 | 33.8 | 35.8 | 38.0 | 41.8 | 45.6 | 49.0 | |
| 2300 | pressure | 50 | 59 | 66 | 74 | 82 | 92 | 101 | 111 | |
| | HP | 32.4 | 33.2 | 34.4 | 36.8 | 39.6 | 43.0 | 46.6 | 50.0 | |
| 2400 | pressure | 45 | 56 | 65 | 73 | 81 | 91 | 100 | | |
| | HP | 34.2 | 33.6 | 35.6 | 37.6 | 40.8 | 43.8 | 47.4 | | |
| 2500 | pressure | 45 | 52 | 63 | 71 | 80 | 90 | 99 | | |
| | HP | 34.4 | 35.2 | 36.6 | 38.4 | 42.0 | 44.8 | 48.4 | | |
| 2600 | pressure | 44 | 49 | 61 | 69 | 79 | 89 | 98 | | |
| | HP | 34.6 | 36.2 | 37.8 | 39.6 | 43.2 | 45.6 | 49.6 | | |
| 2700 | pressure | 39 | 49 | 55 | 67 | 76 | 87 | | | |
| | HP | 35.8 | 37.0 | 40.4 | 41.0 | 44.8 | 47.0 | | | |
| 2800 | pressure | 35 | 43 | 54 | 61 | 74 | 85 | | | |
| | HP | 36.4 | 38.0 | 40.6 | 43.8 | 45.8 | 48.8 | | | |
| 2900 | pressure | 32 | 40 | 53 | 60 | 67 | | | | |
| | HP | 37.2 | 38.6 | 41.2 | 44.0 | 46.8 | | | | |
| 3000 | pressure | 26 | 35 | 46 | 59 | 66 | | | | |
| | HP | 38.4 | 39.4 | 42.2 | 44.2 | 47.4 | | | | |
| 3100 | pressure | | 31 | 43 | 53 | 65 | | | | |
| | HP | | 39.6 | 43.0 | 46.2 | 48.2 | | | | |
| 3200 | pressure | | | 36 | 49 | | | | | |
| | HP | | | 44.2 | 47.0 | | | | | |
| 3300 | pressure | | | 30 | 44 | | | | | |
| | HP | | | 45.0 | 48.2 | | | | | |
| 3400 | pressure | | | | 41 | | | | | |
| | HP | | | | 49.0 | | | | | |

pressure = inches water column

* = Not Recommended - do not operate below the minimum CFM listed in table

Example:

If you need 2500 cfm with 95" H₂O, you could use model V50G

If you need 3000 cfm with 65" H₂O, you could use model V50F

