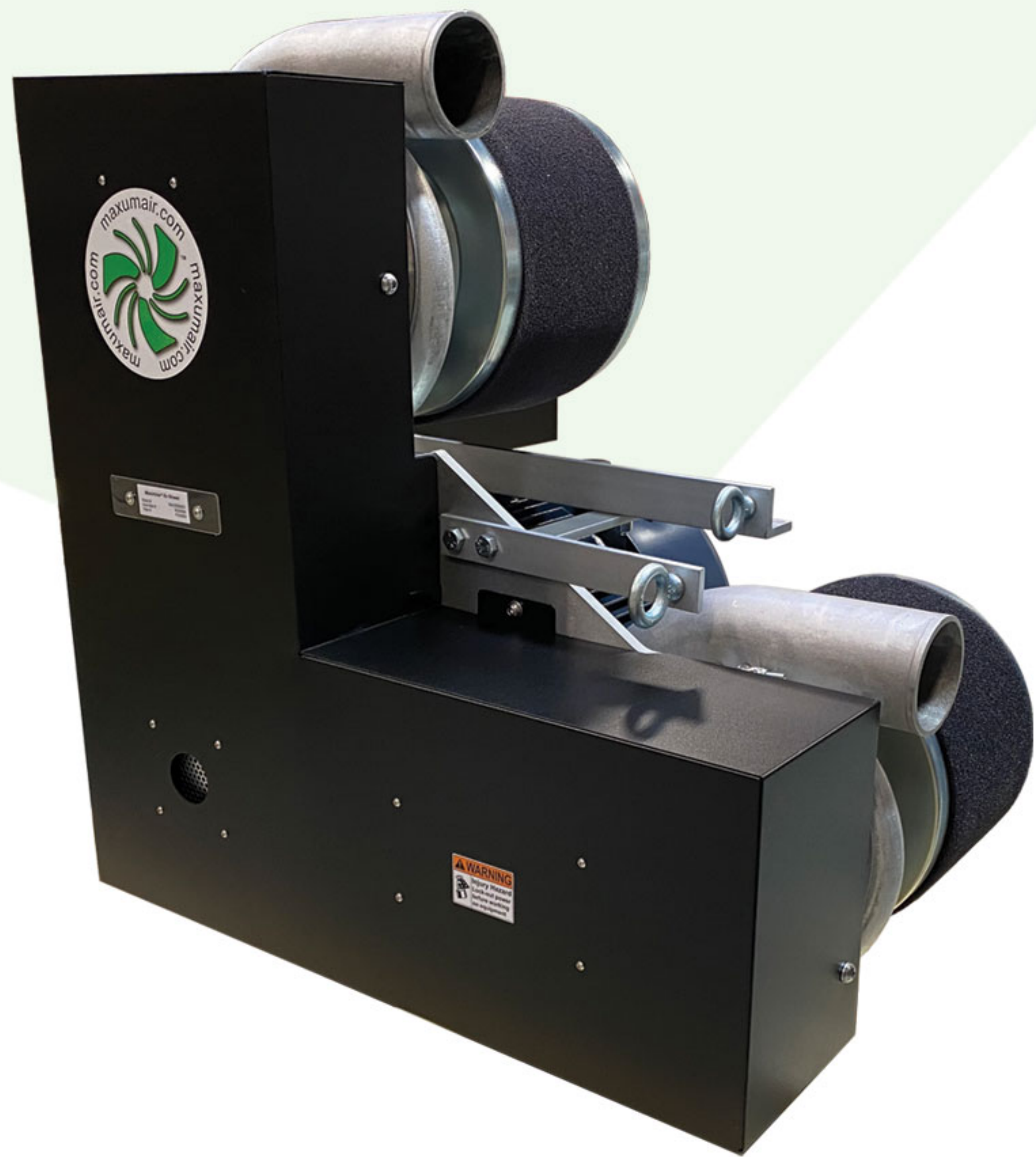


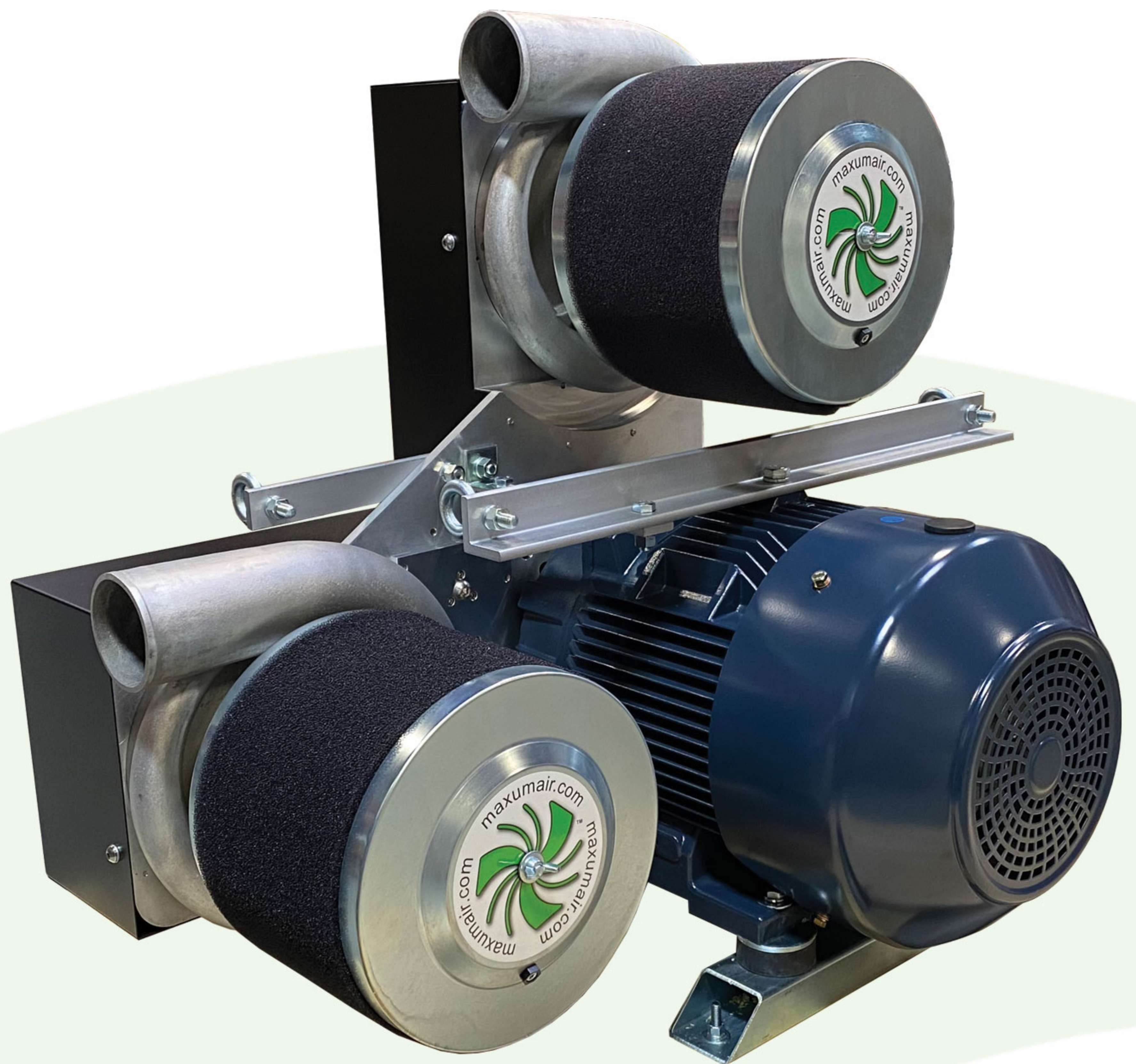


MAXUMIZER® V60 AIR BLOWER



-Bearing Bridge™ drive system provides industrial durability and extended life

-Achieves higher output at lower operating speeds



-High efficiency system uses less horsepower and SAVES ENERGY

-Dual outlets standard

-Complete system with integrated filter and vibration mounts

All Maxum Air Blowers are specifically designed to provide the optimum output range and energy efficiency for blowing and drying applications. They are the ideal choice for powering your blow-off system when used with *Maxumizer* Air Knives and Maxum's exclusive and revolutionary Nozzle Bar®*

Maximum Performance..... Less Hype.

Maxum LLC | MaxumAir.com
Phone: 248-726-7110 Fax: 248-852-4312

*U.S. Patent
#8,814,067
#8,551,529
#9,557,108



NOTE: Output data for Model V Blowers is the total combined output of BOTH blower heads.

		Model V60									
CFM		A	B	C	D	E	F	G	N	P	Q
1600	pressure	58	64	71	78	86	95	104	*	*	*
	HP	27.4	28.4	29.8	31.2	33.2	35.2	38.2	*	*	*
1700	pressure	58	64	70	78	85	95	104	*	*	*
	HP	27.6	29.2	30.4	31.8	34.0	36.2	39.0	*	*	*
1800	pressure	57	63	70	77	85	95	104	114	*	*
	HP	28.8	29.8	31.2	32.8	34.8	37.2	39.8	43.6	*	*
1900	pressure	56	63	69	77	84	94	103	113	124	*
	HP	29.6	30.6	32.2	33.6	35.8	38.4	41.0	45.2	47.8	*
2000	pressure	56	62	69	76	84	94	103	112	123	138
	HP	30.4	31.2	33.0	34.4	36.8	39.6	42.4	46.6	49.2	54.0
2100	pressure	54	62	68	76	83	94	102	112	123	137
	HP	31.0	31.8	33.4	35.0	37.4	40.6	44.2	47.8	50.4	55.6
2200	pressure	53	60	67	75	83	93	102	111	122	137
	HP	31.4	32.4	33.8	35.8	38.0	41.8	45.6	49.0	51.4	57.0
2300	pressure	50	59	66	74	82	92	101	111	122	136
	HP	32.4	33.2	34.4	36.8	39.6	43.0	46.6	50.0	53.0	58.4
2400	pressure	45	56	65	73	81	91	100	110	121	
	HP	34.2	33.6	35.6	37.6	40.8	43.8	47.4	51.2	54.8	
2500	pressure	45	52	63	71	80	90	99	110	121	
	HP	34.4	35.2	36.6	38.4	42.0	44.8	48.4	52.4	56.2	
2600	pressure	44	49	61	69	79	89	98	109	120	
	HP	34.6	36.2	37.8	39.6	43.2	45.6	49.6	53.6	57.6	
2700	pressure	39	49	55	67	76	87	98	109	120	
	HP	35.8	37.0	40.4	41.0	44.8	47.0	50.8	55.8	59.0	
2800	pressure	35	43	54	61	74	85	96	108		
	HP	36.4	38.0	40.6	43.8	45.8	48.8	51.8	57.8		
2900	pressure	32	40	53	60	67	83	94	105		
	HP	37.2	38.6	41.2	44.0	46.8	51.0	52.4	59.4		
3000	pressure	26	35	46	59	66	81	92	103		
	HP	38.4	39.4	42.2	44.2	47.4	53.2	55.0	59.9		
3100	pressure		31	43	53	65	74	90			
	HP		39.6	43.0	46.2	48.2	55.6	57.8			
3200	pressure			36	49	60	73				
	HP			44.2	47.0	51.4	56.0				
3300	pressure			30	44	56	72				
	HP			45.0	48.2	52.2	56.2				
3400	pressure				41	49	65				
	HP				49.0	53.2	58.0				
3500	pressure					45	60				
	HP					54.6	59.6				
3600	pressure					40	54				
	HP					55.8	60.0				

pressure = inches water column

* = Not Recommended - do not operate below the minimum CFM listed in table

Example:

If you need 3000 cfm with 90" H₂O,
you could use model P30G

If you need 3500 cfm with 55" H₂O,
you could use model P30F

